



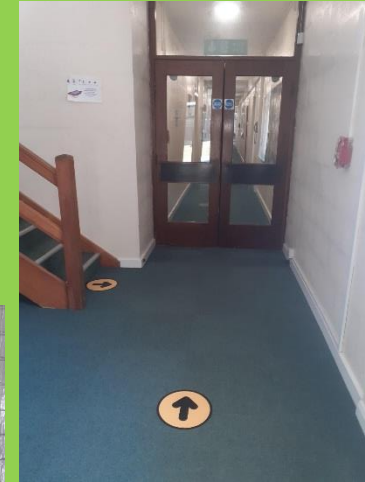
Lining up spots at the start of the day.
Taxis will arrive at different times.
One person, One spot.
2 meters apart.



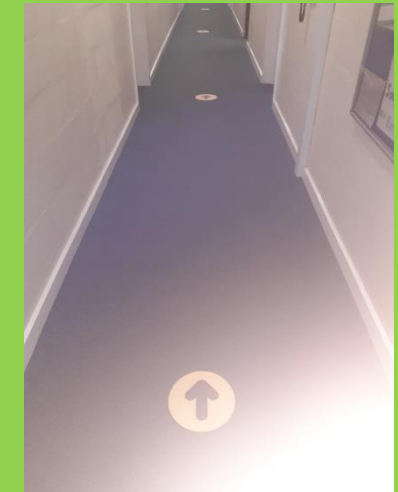
At the school entrance.



Follow the one way system to
your class 'bubble'

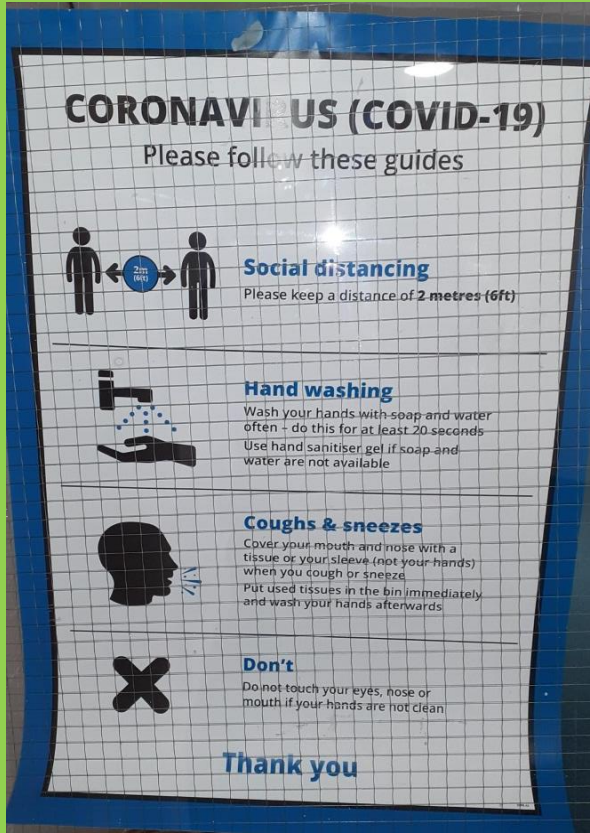


FOLLOW THE ARROWS
to stay safe.

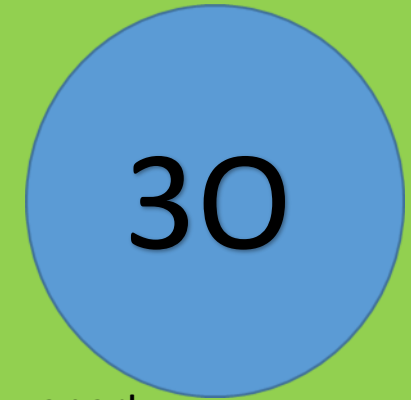
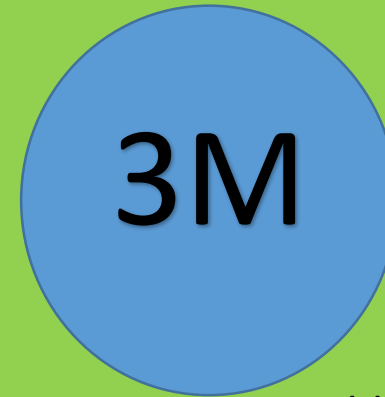


Stay
Safe

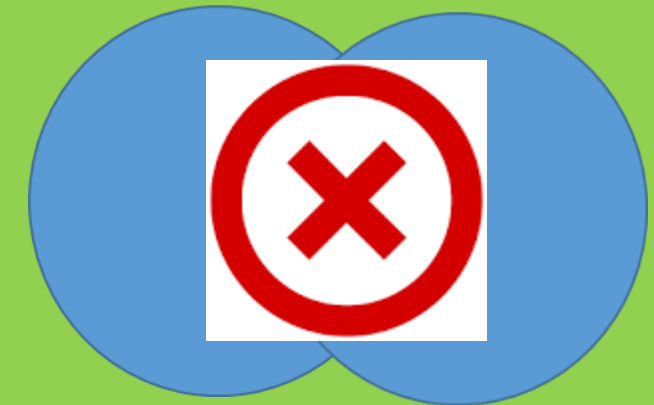
Don't forget the messages- they keep everyone safe.



IMPORTANT messages.
Everyone needs to be able to follow these guides so we can all stay safe.



Bubbles have to stay apart.

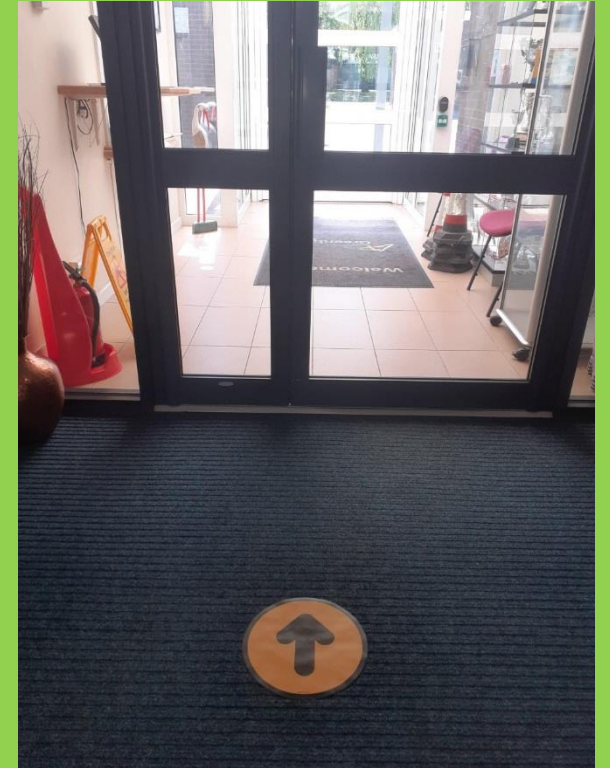


Bubbles can not mix or join.

We will still be able to go out for break in our 'bubbles' and enjoy the weather.



Tables and chairs in 4L
Keeping things 2 metres
apart is important.



Home through the main entrance.
EVERYONE SAFE

4L and 4T will need to use the nearest
toilet and exit to access outside.

